

C. IZVIRI

C.0. Pojasnila k preglednicam

V poglavju o monitoringu izvirov (C) so poleg Pojasnil k preglednicam (C.0.) s predstavitvijo merjenih parametrov, podana še štiri podpoglavja s preglednicami.

V preglednicah podajamo dnevne vrednosti vodostajev (C.1.), temperatur (C.2.), specifične električne prevodnosti (C.3.) in pretokov (C.4.), njihove značilne mesečne in letne vrednosti, ter njihove diagrame.

Razlage pojmov in okrajšav v preglednicah:

Št. – tekoča številka izvira;

Šifra – šifra vodomerne postaje (po šifrantu Agencije Republike Slovenije za okolje);

Tip – opremljenost postaje (**P** – podatkovni zapisovalnik);

Postaja – ime postaje za izvir oz. lokacija;

Izvir – ime izvira;

Kota »0« – nadmorska višina nulte točke, od koder se meri višina vodnega stolpca oz. vodostaj;

X in Y – Gauss-Kruegerjeve koordinate položaja postaje na topografski karti merila 1 : 25000;

Začetek opazovanj – začetno leto merjenj podatkov;

Stran – stran, na kateri so za postajo izvira navedeni podatki o vodostajih (**H**), temperaturi (**T**), specifični električni prevodnosti (**EP**) in pretoku (**Q**);

-- ni podatka;

Hnk – najnižji mesečni oz. letni vodostaj;

Hs – srednje mesečni oz. letni vodostaj;

Hvk – najvišji mesečni oz. letni vodostaj;

Tnk – najnižja mesečna oz. letna temperatura;

Ts – srednja mesečna oz. letna temperatura;

Tvk – najvišja mesečna oz. letna temperatura;

EPnk – najnižja mesečna oz. letna vrednost specifične električne prevodnosti;

EPs – srednje mesečna oz. letna vrednost specifične električne prevodnosti;

EPvk – najvišja mesečna oz. letna vrednost specifične električne prevodnosti;

Qnk – najmanjši mesečni oz. letni pretok;

Qs – srednje mesečni oz. letni pretok;

Qvk – največji mesečni oz. letni pretok.

C. SPRINGS

C.0. Explanation to the tables

In the chapter on the monitoring of springs (C) four sections containing tables were added to the Explanation to the Tables (C.0.) including a presentation of measured parameters.

Data on daily water levels are listed in C.1., daily values of temperatures in C.2., daily values of specific electrical conductivity are listed in C.3., and daily discharge values are listed in the table in C.4 along with graphs.

Explanation of terms and abbreviations used in the tables:

Št. (No.) – current number of the spring;

Šifra (Code) – code of a gauging station (acc. to the code list Environmental Agency of the Republic of Slovenia);

Tip (Type) – equipment at the station (**P** – data logger);

Postaja (Station) – name of the station for a spring or location;

Izvir – the name of the spring;

Kota »0« (datum point) – altitude of point zero used as a reference for measuring water level;

X in Y – Gauss-Krueger co-ordinates of the station's position on the topographical map, scale 1 : 25000;

Začetek opazovanj (Beginning of observations) – the first year of measuring data;

Stran (Page) – the page listing the data on water levels (**H**), temperature (**T**), specific electrical conductivity (**EP**) and discharge (**Q**);

-- no data;

Hnk – the lowest monthly and annual water levels;

Hs – mean monthly and annual water levels;

Hvk – the highest monthly and annual water levels;

Tnk – the lowest monthly and annual temperatures;

Ts – mean monthly and annual temperatures;

Tvk – the highest monthly and annual temperatures;

EPnk – the lowest monthly and annual values of the specific elec. conductivity;

EPs – mean monthly and annual values of the specific electrical conductivity;

EPvk – the highest monthly and annual values of the specific electrical conductivity;

Qnk – the lowest monthly and annual discharge;

Qs – mean monthly and annual discharge;

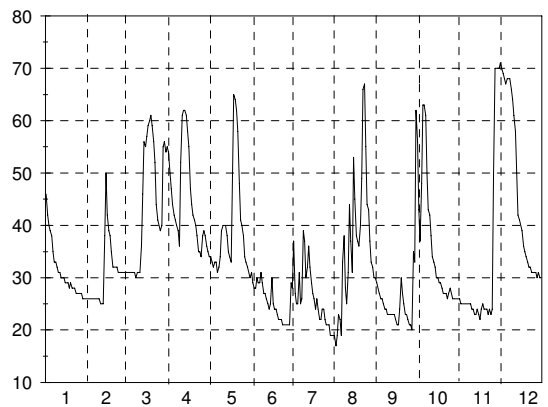
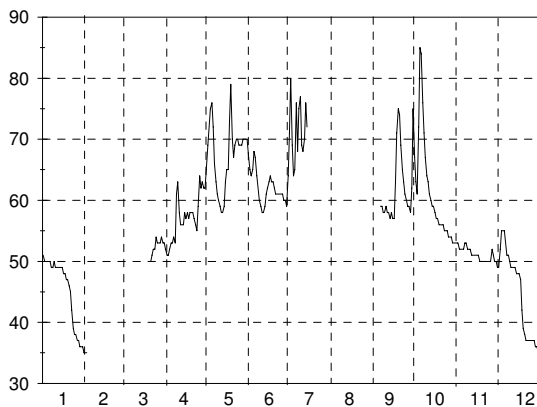
Qvk – the highest monthly and annual discharge.

C.1. Seznam vodomernih postaj na izviri (l. 2005)

Št.	Šifra	Postaja	Tip	Izvir	Y	X	Kota »0« m n. m.	Začetek opazovanj	Stran			
					m	m			H	Q	T	EP
1	4360	Izvir	P	Kamniška Bistrica	5468815	5131580	–	2001	205		209	211
2	4985	Dolence I	P	Krupa	5518040	5054200	–	2004		207		
3	4995	Metlika	P	Metliški Obrh	5525145	5056475	–	2003	205		209	211
4	5580	Vrhnika	P	Veliki Obrh	5461835	5062370	577.137	2004		207		
5	7350	Stopiče	P	Težka voda	5516140	5069215	–	1955		208		
6	8453	Izvir	P	Podroteja	5425180	5094000	327.780	1999	206		210	212

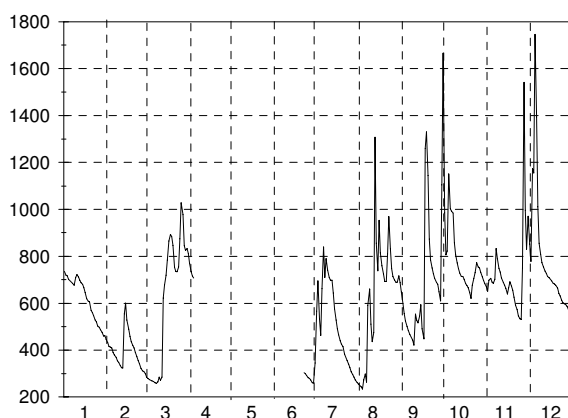
C.2. Dnevni vodostaji z nivogramom (l. 2005)

Št.: 1 IZVIR KAMNIŠKA BISTRICA												Št.: 3 METLIKA METLIŠKI OBRH													
Šif: 4360 Tip: P Kota"0": ---												Šif: 4995 Tip: P Kota"0": ---													
Dan	1	2	3	4	5	6	7	8	9	10	11	12	Dan	1	2	3	4	5	6	7	8	9	10	11	12
1	51	35		52	65	67	71			67	53	49	1	46	26	31	54	34	31	28	19	29	56	26	71
2	50	35		51	69	65	80			63	53	49	2	42	26	31	50	34	29	37	17	28	43	25	70
3	50			51	72	64	69			61	52	52	3	40	26	31	47	33	28	27	19	27	37	25	69
4	50			52	75	65	64			72	52	55	4	39	26	31	44	32	28	25	23	26	48	25	68
5	50			53	76	68	65			85	52	55	5	38	26	31	42	33	30	25	22	26	63	25	67
6	50			53	72	67	76		59	84	52	55	6	35	26	31	41	33	29	31	19	25	63	25	68
7	49			54	66	64	68		59	76	53	53	7	33	26	31	40	31	29	25	33	24	61	25	68
8	49			53	63	62	75		58	71	53	51	8	33	26	30	39	32	31	26	38	24	50	25	68
9	50			61	61	60	77		58	67	52	51	9	32	26	31	36	34	29	39	28	23	43	25	66
10	49			63	60	59	69		59	64	52	50	10	31	25	31	52	39	27	37	25	23	42	24	64
11	49			58	59	58	68		58	63	52	49	11	31	25	31	61	40	27	30	31	23	38	24	61
12	49			56	58	58	70		58	61	51	49	12	30	25	36	62	40	26	32	44	23	34	23	58
13	49			56	58	59	76		57	60	51	49	13	30	38	46	62	40	25	36	37	23	33	23	50
14	49			56	59	61	72		58	59	51	49	14	30	50	56	61	38	24	32	31	23	32	24	42
15	49			58	63	62			57	59	51	48	15	29	42	55	58	35	25	29	53	22	30	23	41
16	48			57	65	63			57	58	51	48	16	29	39	57	55	34	30	27	45	21	30	22	40
17	48			58	65	64			63	57	51	48	17	29	38	59	47	33	25	26	38	21	29	24	39
18	47			57	73	63			71	57	50	47	18	28	35	60	44	49	24	24	37	24	29	25	36
19	47			58	79	63			75	56	50	42	19	29	32	61	42	65	24	26	36	30	28	24	35
20	46			58	70	62			74	56	50	39	20	28	32	59	41	64	23	24	40	27	27	24	34
21	45		50	58	67	61			69	56	50	38	21	28	32	56	40	62	22	22	49	25	27	24	33
22	42		51	57	69	61			65	56	50	37	22	28	32	52	38	58	22	22	66	23	27	23	32
23	39		52	56	70	61			63	55	50	37	23	27	31	44	35	48	22	24	67	23	26	24	32
24	38		52	55	70	61			61	55	50	37	24	27	31	41	35	41	21	24	55	22	27	23	31
25	38		54	59	69	61			60	55	50	37	25	27	31	40	34	40	21	22	44	21	28	24	31
26	37		53	64	69	61			59	54	50	37	26	27	31	39	38	38	21	21	43	21	27	49	31
27	37		53	62	69	60			59	54	52	37	27	27	31	40	39	34	21	21	37	20	26	70	31
28	36		53	63	70	60			58	54	51	37	28	26	31	55	38	33	21	21	33	35	26	70	30
29	36		54	62	70	59			62	53	50	36	29	26		56	36	32	21	19	32	33	26	70	31
30	36		53	62	70	64			75	53	50	36	30	26		54	35	31	29	19	30	62	26	70	30
31	35		53	70						53		35	31	26		55			30	19	30		26		30
Dan	31	2	21	2	13	12	1		16	31	30	30	Dan	28	11	4	24	31	26	30	2	27	28	24	30
Hnk	35	35	50	51	57	58	61		56	53	49	34	Hnk	22	22	27	33	29	18	14	14	16	24	18	28
Hs	45	35	53	57	67	62	71		62	61	51	45	Hs	31	31	44	45	39	26	26	36	26	36	31	47
Hvk	51	36	55	71	82	70	85		78	86	54	57	Hvk	54	52	62	64	66	37	44	70	65	65	72	71
Dan	1	1	25	9	19	5	2		30	5	8	5	Dan	1	14	18	13	19	16	9	22	30	6	27	1
Hnk			34			Hs	57			Hvk		86	Hnk		14				Hs	35			Hvk		72



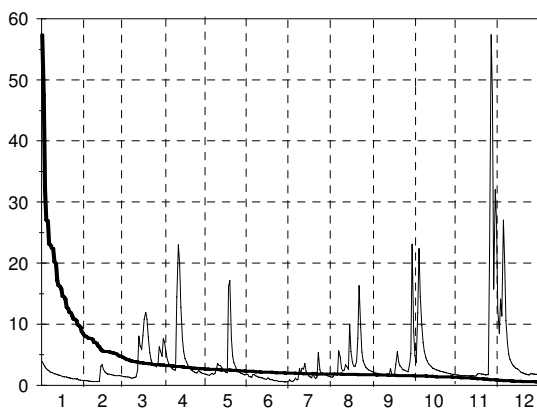
C.2. Dnevni vodostaji z nivogramom (l. 2005)

Št.: 6 IZVIR PODROTEJA												
Šif: 8453 Tip: P Kota"0": 327.780												
Dan	1	2	3	4	5	6	7	8	9	10	11	12
1	735	432	284	769			566	250	598	986	651	852
2	719	416	279	734			695	243	556	806	698	778
3	717	414	274	716			533	234	524	822	705	1174
4	702	409	272	707			463	273	501	1151	690	1155
5	695	390	269				661	298	483	1003	685	1746
6	690	380	266				840	264	467	992	701	1393
7	685	368	261				710	591	454	985	833	1010
8	677	354	257				789	660	442	857	790	856
9	710	347	265				740	511	421	806	748	807
10	722	334	285				710	435	553	771	733	772
11	711	325	272				698	474	527	747	707	754
12	698	323	285				698	1307	516	729	688	736
13	687	554	622				643	855	544	715	676	728
14	681	600	676				576	738	593	714	663	715
15	666	528	720				528	953	491	702	640	708
16	646	490	783				491	814	448	684	665	701
17	619	459	865				465	760	1259	675	691	695
18	608	435	893				440	725	1330	665	672	685
19	606	420	884				425	693	1145	645	655	682
20	570	408	846				415	693	873	620	626	676
21	560	390	753				382	809	784	677	591	664
22	547	372	735			304	369	969	749	705	572	642
23	528	356	734			300	355	832	726	730	545	631
24	520	342	755			291	340	747	706	773	534	613
25	503	322	874			282	325	715	688	754	531	602
26	497	312	1028			279	308	699	681	750	751	597
27	487	309	977			273	295	689	649	731	1541	593
28	476	300	845			261	285	690	610	712	996	587
29	460		825			260	273	717	1104	697	831	575
30	461		833			345	262	687	1665	683	970	560
31	445		811				255	647		669		549
Dan	31	28	8	4		28	31	3	9	20	25	31
Hnk	427	279	243	691		244	238	217	403	603	518	535
Hs	614	396	604	735		288	501	644	703	773	726	782
Hvk	759	687	1115	798		386	1231	1598	2050	1326	1761	2103
Dan	1	13	25	1		30	5	12	29	4	27	5
Hnk			217									
Hs							631					
Hvk												2103

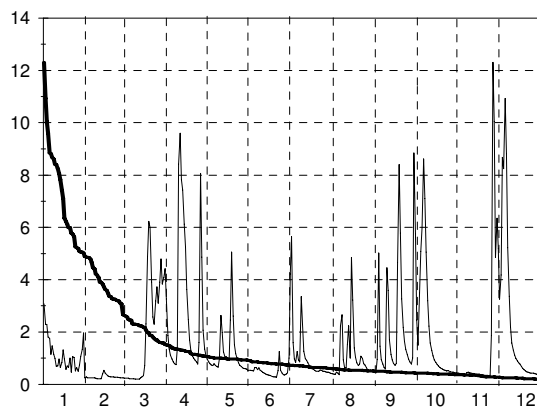


C.3. Dnevni pretoki s hidrogramom in krivuljo trajanja – v m³/s (l. 2005)

Št.: 2 DOLENCE I KRUPA												Št.: 4 VRHNIKA VELIKI OBRH													
Šif: 4985 Tip: P Kota"0": ---												Šif: 5580 Tip: P Kota"0": 577.137													
Dan	1	2	3	4	5	6	7	8	9	10	11	12	Dan	1	2	3	4	5	6	7	8	9	10	11	12
1	3.9	0.79	1.45	7.02	1.81	1.76	0.61	1.37	2.19	8.77	1.72	26.9	1	3.08	0.29	0.23	3.26	0.96	0.54	4.21	0.4	0.47	5.75	0.43	5.2
2	3.4	0.75	1.44	5.2	1.74	1.46	0.93	1.31	2.1	4.85	1.7	12.5	2	2.3	0.25	0.23	1.87	0.85	0.53	5.64	0.39	0.44	2.45	0.42	3.25
3	3	0.72	1.4	4.18	1.67	1.38	0.67	1.46	2	3.75	1.65	8.53	3	2.28	0.25	0.23	1.35	0.78	0.52	1.59	0.38	0.95	1.5	0.4	4.18
4	2.69	0.69	1.39	3.59	1.62	1.32	0.58	2.07	1.98	11.9	1.62	14.1	4	1.81	0.25	0.23	1.11	0.74	0.51	0.96	0.46	5.01	3.49	0.39	8.68
5	2.5	0.67	1.37	3.15	1.82	1.78	0.78	1.73	1.88	22.4	1.59	11.3	5	1.76	0.25	0.22	0.96	0.72	0.65	0.84	0.42	1.46	5.08	0.38	8.25
6	2.33	0.65	1.32	2.84	1.93	1.74	1.17	1.61	1.83	14.6	1.56	27	6	1.14	0.24	0.22	0.85	0.79	0.64	1.26	0.37	0.94	5.99	0.37	10.9
7	2.15	0.63	1.24	2.65	1.76	1.53	0.9	5.62	1.84	9.8	1.55	20.2	7	1.47	0.24	0.22	0.78	0.73	0.56	0.93	2.24	0.77	8.62	0.38	8.82
8	2.08	0.62	1.15	2.49	1.99	1.46	0.92	4.64	1.77	7.01	1.57	10.6	8	1.14	0.23	0.21	0.75	0.68	0.63	0.86	2.66	0.65	7.11	0.45	5.22
9	1.99	0.61	1.23	2.5	2.63	1.3	2.76	2.78	1.72	5.5	1.58	6.84	9	0.99	0.22	0.2	1.38	0.66	0.54	3.35	0.93	0.59	5.06	0.46	3.37
10	1.88	0.6	1.28	14.5	3.57	1.32	1.89	2.33	1.75	4.52	1.58	5.08	10	0.69	0.22	0.2	8.41	0.97	0.5	2.28	0.65	4.46	3.2	0.44	2.18
11	1.82	0.61	1.35	23	3.2	1.25	2.82	2.52	1.73	3.96	1.56	4.2	11	0.7	0.22	0.2	9.6	2.63	0.45	1.27	0.62	3.59	2.23	0.42	1.58
12	1.75	0.64	2.45	19.8	3.23	1.18	2.65	3.4	1.7	3.56	1.57	3.71	12	0.96	0.21	0.2	7.83	1.99	0.43	0.98	1.52	1.7	1.58	0.41	1.3
13	1.69	3.13	8.06	12.8	2.9	1.06	3.57	3.1	1.61	3.28	1.56	3.31	13	0.64	0.4	0.24	7.43	1.24	0.39	0.92	2.24	1.15	1.29	0.41	1.12
14	1.62	3.39	6.43	7.53	2.6	0.99	2.26	2.62	2.72	3.03	1.55	3.03	14	0.84	0.53	0.29	6.13	1.03	0.37	0.82	1	0.93	1.09	0.39	0.99
15	1.53	2.58	5.89	5.47	2.36	0.98	1.76	9.89	1.81	2.82	1.54	2.8	15	1.32	0.42	0.33	5.26	1.05	0.35	0.72	4.85	0.8	0.93	0.39	0.9
16	1.44	2.19	8.08	4.4	2.16	1.22	1.55	5.49	1.73	2.71	1.54	2.72	16	0.97	0.37	0.71	3.63	1.01	0.34	0.66	3.22	0.73	0.84	0.39	0.83
17	1.37	1.96	10.8	3.8	2.03	1.02	1.39	3.71	1.81	2.6	1.82	2.63	17	0.57	0.32	2.31	2.48	0.91	0.32	0.59	1.38	0.8	0.76	0.39	0.77
18	1.36	1.84	11.9	3.32	16.2	0.89	1.24	3.17	3.36	2.5	1.91	2.36	18	0.7	0.3	4.89	1.7	2.45	0.3	0.57	1.02	4.66	0.7	0.37	0.68
19	1.38	1.82	10.8	2.93	17.1	0.94	2.1	3.06	5.53	2.41	1.87	2.15	19	0.64	0.29	6.23	1.3	5.06	0.29	0.54	0.83	8.4	0.65	0.36	0.6
20	1.19	1.77	7.91	2.67	7.71	0.8	1.34	3.9	3.83	2.35	1.82	2.04	20	1.01	0.29	5.99	1.09	2.61	0.29	0.5	0.72	5.77	0.61	0.35	0.56
21	1.24	1.72	5.3	2.47	4.74	0.74	1.13	7.66	3.22	2.3	1.81	1.95	21	0.46	0.28	3.91	1.01	1.51	0.27	0.49	0.77	3.27	0.58	0.34	0.51
22	1.17	1.67	4.12	2.26	3.66	0.72	1.36	16.3	2.87	2.23	1.76	1.86	22	1.06	0.27	2.58	0.93	1.17	0.52	0.5	1.07	2.18	0.55	0.34	0.48
23	1.09	1.59	3.51	2.15	3.06	0.69	5.32	9.54	2.55	2.14	1.71	1.8	23	1.02	0.27	2.3	0.85	0.97	1.26	0.55	0.99	1.64	0.53	0.34	0.46
24	1.07	1.56	3.34	2.04	2.62	0.66	2.54	5.42	2.51	2.14	1.72	1.74	24	0.51	0.27	3.18	0.77	0.83	0.53	0.53	0.78	1.34	0.51	0.33	0.44
25	1.03	1.59	3.25	2.03	2.32	0.6	1.94	4.02	2.39	2.05	1.72	1.7	25	0.65	0.26	3.72	1.61	0.73	0.43	0.49	0.74	1.13	0.52	0.34	0.43
26	1	1.56	3.01	2.43	2.14	0.64	2.04	3.31	2.26	1.99	22.4	1.89	26	0.49	0.25	3.1	8.06	0.67	0.37	0.49	0.63	0.97	0.5	1.87	0.43
27	1.06	1.57	3.51	2.2	2	0.59	1.87	2.91	2.2	1.93	57.4	1.88	27	0.73	0.25	3.9	4.86	0.63	0.36	0.48	0.55	0.85	0.48	12.3	0.42
28	0.84	1.49	6.29	2.04	1.88	0.55	1.73	2.71	3.44	1.88	47.4	1.86	28	1.06	0.24	4.79	2.08	0.61	0.39	0.47	0.54	0.77	0.47	10.1	0.4
29	0.84		5.6	1.94	1.78	0.55	1.62	2.5	5.25	1.84	15.8	1.8	29	1.34		3.84	1.35	0.59	0.44	0.46	0.55	1.01	0.46	4.85	0.39
30	0.79		4.78	1.87	1.68	0.6	1.54	2.39	23.1	1.79	32	1.77	30	1.97		4.08	1.11	0.58	1	0.44	0.51	8.84	0.44	6.35	0.37
31	0.77		7.63		1.81		1.46	2.29		1.77		1.8	31	0.25		4.42		0.54		0.41	0.5		0.44		0.36
Dan	28	12	8	30	31	29	5	3	6	30	7	25	Dan	21	1	11	9	31	26	25	3	3	30	3	31
Qnk	0.63	0.59	0.88	1.84	1.54	0.55	0.55	1.25	1.2	1.74	1.49	1.69	Qnk	0.12	0.11	0.19	0.7	0.51	0.22	0.31	0.34	0.41	0.42	0.25	0.36
Qs	1.68	1.41	4.43	5.17	3.48	1.06	1.76	4.03	2.69	4.66	7.22	6.2	Qs	1.12	0.28	2.05	2.99	1.18	0.49	1.12	1.09	2.21	2.08	1.5	2.39
Qvk	4.26	4.44	12.6	25.9	27.8	2.03	7.72	19.3	28.4	26.3	61.7	37	Qvk	4.54	0.64	6.66	10.5	5.61	2.66	7.84	6.26	9.45	9.07	13.3	11.2
Dan	1	13	18	11	18	5	23	22	30	5	27	1	Dan	1	14	19	11	19	30	2	15	30	7	27	6
Qnk		0.55		Qs	3.14		Qvk	61.7		Qnk	0.11		Qs	1.55		Qvk	13.3								



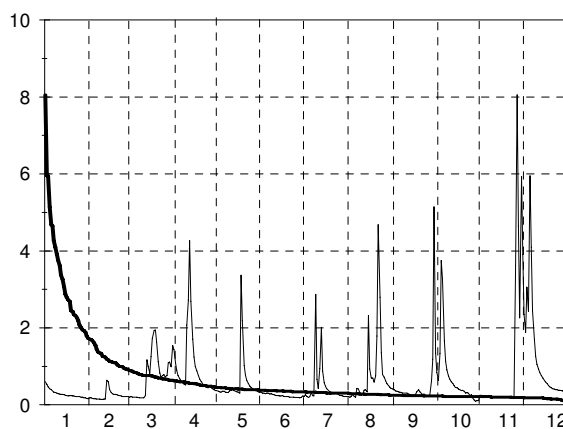
Q0	Q3	Q6	Q9	Q12
57.4	3.28	1.99	1.56	0.55



Q0	Q3	Q6	Q9	Q12
12.3	1.51	0.73	0.43	0.2

C.3. Dnevni pretoki s hidrogramom in krivuljo trajanja – v m³/s (l. 2005)

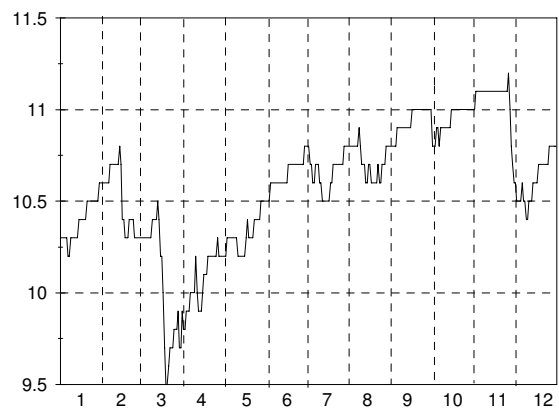
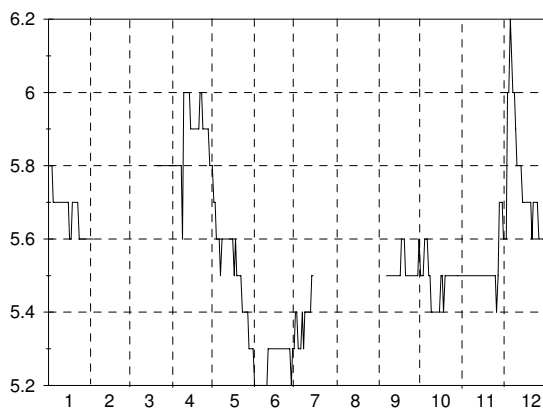
Št.: 5 STOPIČE TEŽKA VODA												
Šif: 7350 Tip: P Kota"0": ---												
Dan	1	2	3	4	5	6	7	8	9	10	11	12
1	0.6	0.18	0.2	1.44	0.37	0.33	0.21	0.21	0.41	1.35	0.25	3.9
2	0.53	0.18	0.21	1.09	0.35	0.31	0.26	0.2	0.39	0.84	0.25	2.34
3	0.47	0.17	0.2	0.89	0.34	0.3	0.22	0.21	0.36	0.64	0.24	1.89
4	0.42	0.16	0.2	0.76	0.33	0.29	0.19	0.27	0.35	1.34	0.24	3.06
5	0.39	0.16	0.2	0.67	0.35	0.31	0.22	0.21	0.34	3.75	0.23	2.43
6	0.36	0.15	0.2	0.62	0.35	0.3	0.32	0.2	0.33	3.26	0.23	5.95
7	0.33	0.15	0.19	0.57	0.33	0.28	0.24	0.43	0.32	1.67	0.23	4.09
8	0.32	0.15	0.18	0.54	0.32	0.29	0.23	0.41	0.31	1.13	0.23	2.44
9	0.31	0.14	0.18	0.52	0.32	0.27	2.87	0.3	0.3	0.91	0.22	1.7
10	0.29	0.14	0.18	2.07	0.36	0.26	0.66	0.25	0.31	0.75	0.22	1.26
11	0.28	0.15	0.18	2.72	0.38	0.25	0.43	0.27	0.3	0.67	0.22	1.05
12	0.27	0.15	0.24	4.26	0.4	0.24	0.95	0.38	0.28	0.6	0.22	0.93
13	0.27	0.64	1.17	2.69	0.37	0.24	2.01	0.4	0.27	0.56	0.21	0.84
14	0.26	0.6	1	1.71	0.35	0.23	0.87	0.34	0.26	0.5	0.21	0.76
15	0.25	0.4	0.82	1.24	0.34	0.23	0.57	2.32	0.25	0.45	0.21	0.69
16	0.24	0.32	1.25	1	0.33	0.24	0.48	0.93	0.25	0.44	0.21	0.65
17	0.23	0.29	1.72	0.88	0.31	0.22	0.42	0.69	0.27	0.41	0.21	0.6
18	0.24	0.27	1.93	0.76	3.37	0.22	0.37	0.69	0.34	0.39	0.2	0.55
19	0.24	0.27	1.94	0.67	2.19	0.21	0.34	0.59	0.4	0.37	0.2	0.5
20	0.23	0.26	1.62	0.61	1.02	0.21	0.31	0.75	0.34	0.38	0.19	0.47
21	0.23	0.25	1.12	0.56	0.77	0.2	0.29	1.79	0.31	0.35	0.19	0.44
22	0.22	0.24	0.83	0.51	0.64	0.2	0.29	4.68	0.26	0.31	0.18	0.42
23	0.21	0.23	0.72	0.48	0.56	0.2	0.31	2.8	0.28	0.32	0.18	0.41
24	0.21	0.22	0.76	0.45	0.49	0.2	0.29	1.36	0.25	0.3	0.18	0.39
25	0.21	0.22	0.78	0.44	0.45	0.19	0.27	0.79	0.24	0.24	0.18	0.39
26	0.2	0.21	0.73	0.48	0.42	0.19	0.25	0.72	0.23	0.26	3.62	0.38
27	0.2	0.22	0.76	0.44	0.4	0.19	0.24	0.62	0.22	0.18	8.05	0.38
28	0.18	0.21	1.09	0.42	0.37	0.18	0.23	0.55	0.62	0.13	4.65	0.37
29	0.18		1.11	0.4	0.36	0.19	0.22	0.5	1.19	0.09	2.26	0.36
30	0.17		0.99	0.37	0.34	0.23	0.22	0.46	5.14	0.11	5.94	0.34
31	0.16		1.55		0.33		0.21	0.43		0.11		0.34
Dan	31	8	11	30	16	15	5	25	27	31	22	31
Qnk	0.15	0.13	0.16	0.35	0.23	0.17	0.17	0.14	0.15	0.00	0.16	0.32
Qs	0.28	0.24	0.78	1.01	0.57	0.24	0.51	0.8	0.5	0.74	0.99	1.3
Qvk	0.64	1.16	2.19	5.12	9.43	0.35	8.14	6.05	9.13	4.97	10.4	7.92
Dan	1	13	18	12	18	1	9	22	30	5	27	6
Qnk	0.00			Qs			0.57	Qvk			10.4	



Q0	Q3	Q6	Q9	Q12
8.05	0.62	0.34	0.23	0.09

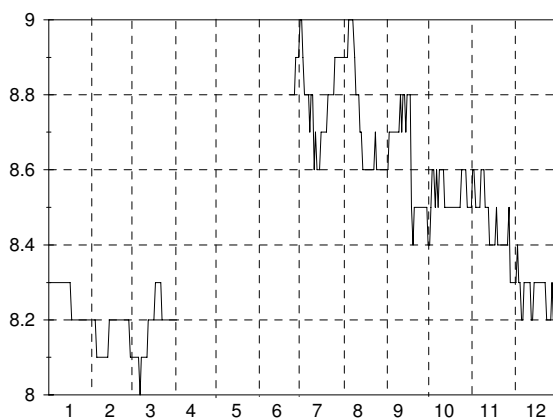
C.4. Dnevne temperature s termogramom – v °C (l. 2005)

Št.: 1 IZVIR KAMNIŠKA BISTRICA												Št.: 3 METLIKA METLIŠKI OBRH													
Šif: 4360 Tip: P Kota"0": ----												Šif: 4995 Tip: P Kota"0": ----													
Dan	1	2	3	4	5	6	7	8	9	10	11	12	Dan	1	2	3	4	5	6	7	8	9	10	11	12
1	5.8	5.6		5.8	5.8	5.2	5.4			5.5	5.5	5.6	1	10.3	10.6	10.3	9.8	10.2	10.5	10.8	10.8	10.8	10.8	11	10.6
2	5.8	5.6		5.8	5.7	5.2	5.4			5.5	5.5	5.6	2	10.3	10.6	10.3	9.8	10.2	10.5	10.8	10.8	10.8	10.8	11.1	10.5
3	5.8			5.8	5.7	5.2	5.3			5.5	5.5	5.6	3	10.3	10.6	10.3	9.9	10.3	10.5	10.7	10.8	10.8	10.8	11.1	10.5
4	5.7			5.8	5.6	5.2	5.3			5.6	5.5	6	4	10.3	10.6	10.3	9.9	10.3	10.6	10.7	10.8	10.8	10.9	11.1	10.5
5	5.7			5.8	5.6	5.2	5.3			5.6	5.5	6	5	10.3	10.6	10.3	9.9	10.3	10.6	10.6	10.8	10.9	10.9	11.1	10.5
6	5.7			5.8	5.6	5.2	5.4		5.5	5.6	5.5	6.2	6	10.2	10.7	10.3	10	10.3	10.6	10.6	10.8	10.9	10.8	11.1	10.6
7	5.7			5.8	5.5	5.2	5.3		5.5	5.5	5.5	6.1	7	10.2	10.7	10.3	10	10.3	10.6	10.7	10.8	10.9	10.9	11.1	10.5
8	5.7			5.8	5.6	5.2	5.4		5.5	5.5	5.5	6	8	10.3	10.7	10.3	10	10.3	10.6	10.7	10.9	10.9	10.9	11.1	10.5
9	5.7			5.6	5.6	5.2	5.4		5.5	5.4	5.5	6	9	10.3	10.7	10.4	10	10.3	10.6	10.7	10.8	10.9	10.9	11.1	10.4
10	5.7			6	5.6	5.2	5.4		5.5	5.4	5.5	5.9	10	10.3	10.7	10.4	10.2	10.3	10.6	10.6	10.7	10.9	10.9	11.1	10.4
11	5.7			6	5.6	5.3	5.4		5.5	5.4	5.5	5.8	11	10.3	10.7	10.4	10	10.2	10.6	10.6	10.7	10.9	10.9	11.1	10.5
12	5.7			6	5.6	5.3	5.4		5.5	5.4	5.5	5.8	12	10.3	10.7	10.4	9.9	10.2	10.6	10.5	10.7	10.9	10.9	11.1	10.5
13	5.7			6	5.6	5.3	5.5		5.5	5.4	5.5	5.8	13	10.3	10.8	10.5	9.9	10.2	10.6	10.5	10.6	10.9	10.9	11.1	10.5
14	5.7			6	5.6	5.3	5.5		5.5	5.4	5.5	5.8	14	10.4	10.7	10.4	9.9	10.2	10.6	10.5	10.6	10.9	10.9	11.1	10.6
15	5.7			5.9	5.6	5.3			5.5	5.4	5.5	5.7	15	10.4	10.4	10.2	10	10.2	10.6	10.5	10.7	10.9	11	11.1	10.6
16	5.6			5.9	5.6	5.3			5.5	5.5	5.5	5.7	16	10.4	10.4	10.2	10.1	10.2	10.6	10.5	10.7	11	11	11.1	10.6
17	5.6			5.9	5.5	5.3			5.6	5.5	5.5	5.7	17	10.4	10.3	10	10.1	10.3	10.7	10.5	10.6	11	11	11.1	10.6
18	5.7			5.9	5.6	5.3			5.6	5.4	5.5	5.7	18	10.4	10.3	9.7	10.1	10.4	10.7	10.6	10.6	11	11	11.1	10.7
19	5.7			5.9	5.5	5.3			5.6	5.5	5.5	5.7	19	10.4	10.3	9.5	10.2	10.3	10.7	10.6	10.6	11	11	11.1	10.7
20	5.7			5.9	5.5	5.3			5.5	5.5	5.5	5.7	20	10.5	10.4	9.5	10.2	10.3	10.7	10.7	10.6	11	11	11.1	10.7
21	5.7	5.8		5.9	5.5	5.3			5.5	5.5	5.5	5.7	21	10.5	10.4	9.6	10.2	10.3	10.7	10.7	10.6	11	11	11.1	10.7
22	5.7	5.8		6	5.5	5.3			5.5	5.5	5.5	5.6	22	10.5	10.4	9.7	10.2	10.3	10.7	10.7	10.7	11	11	11.1	10.7
23	5.6	5.8		6	5.4	5.3			5.5	5.5	5.5	5.7	23	10.5	10.4	9.7	10.2	10.4	10.7	10.7	10.6	11	11	11.1	10.7
24	5.6	5.8		5.9	5.4	5.3			5.5	5.5	5.5	5.7	24	10.5	10.3	9.7	10.2	10.4	10.7	10.7	10.6	11	11	11.1	10.7
25	5.6	5.8		5.9	5.4	5.3			5.5	5.5	5.5	5.7	25	10.5	10.3	9.8	10.2	10.4	10.7	10.7	10.7	11	11	11.1	10.7
26	5.6	5.8		5.9	5.4	5.3			5.5	5.5	5.4	5.7	26	10.5	10.3	9.8	10.3	10.4	10.7	10.7	10.7	11	11	11.2	10.8
27	5.6	5.8		5.9	5.4	5.3			5.5	5.5	5.5	5.6	27	10.5	10.3	9.8	10.2	10.4	10.7	10.7	10.7	11	11	11	10.8
28	5.6	5.8		5.9	5.3	5.2			5.5	5.5	5.7	5.6	28	10.5	10.3	9.9	10.2	10.5	10.7	10.8	10.8	11	11	10.8	10.8
29	5.6	5.8		5.8	5.3	5.3			5.5	5.5	5.7	5.6	29	10.6		9.7	10.2	10.5	10.8	10.8	10.8	11	11	10.7	10.8
30	5.6	5.8		5.8	5.3	5.3			5.6	5.5	5.7	5.6	30	10.6		9.7	10.2	10.5	10.8	10.8	10.8	11	11	10.6	10.8
31	5.6	5.8		5.3					5.5	5.5	5.5	5.6	31	10.6		9.9		10.5		10.8	10.8		11	10.8	
Dan	26	1	21	9	31	1	1	24	8	26	29		Dan	5	16	19	1	1	1	11	18	1	1	29	8
Tnk	5.5	5.5	5.8	4.8	5.2	5.2	5.2	5.4	5.4	5.2	5.3		Tnk	10.2	10.3	9.4	9.8	10.2	10.5	10.5	10.5	10.8	10.8	10.6	10.4
Ts	5.7	5.6	5.8	5.9	5.5	5.3	5.4	5.5	5.5	5.5	5.7		Ts	10.4	10.5	10	10.1	10.3	10.6	10.7	10.7	10.9	10.9	11.1	10.6
Tvk	5.9	5.8	6	6.2	5.9	5.5	5.6	5.8	5.6	5.7	6.2		Tvk	10.6	10.9	10.7	10.4	10.7	10.8	10.9	10.9	11.2	11.1	11.3	10.8
Dan	1	1	22	14	1	22	1	17	1	28	5		Dan	28	14	13	10	18	28	30	2	30	4	26	26
Tnk			4.8			Ts	5.6			Tvk	6.2		Tnk			9.4			Ts	10.6			Tvk		11.3



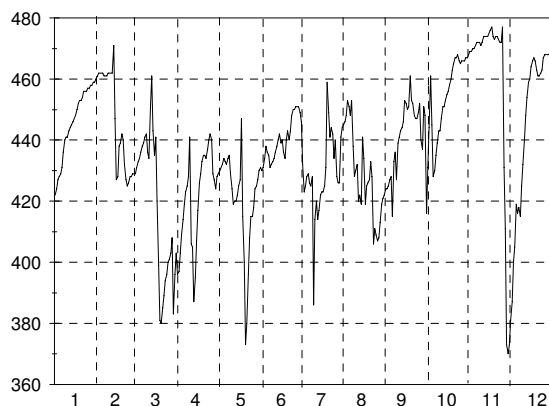
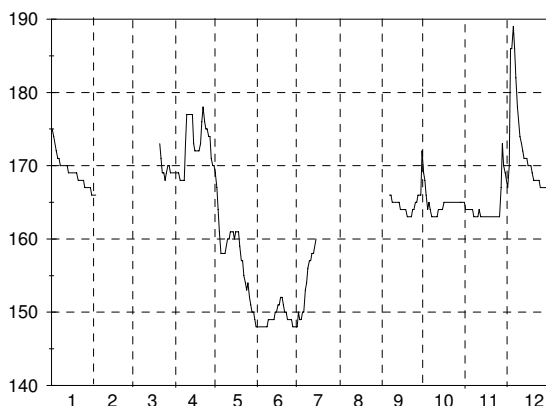
C.4. Dnevne temperature s termogramom – v °C (l. 2005)

Št.: 6 IZVIR PODROTEJA												
Šif: 8453 Tip: P Kota"0": 327.780												
Dan	1	2	3	4	5	6	7	8	9	10	11	12
1	8.3	8.2	8.1	8.2			9	8.9	8.6	8.4	8.6	8.3
2	8.3	8.2	8.1	8.2			8.9	8.9	8.7	8.5	8.6	8.3
3	8.3	8.2	8.1	8.2			8.8	8.9	8.7	8.6	8.5	8.4
4	8.3	8.1	8.1	8.2			8.8	9	8.7	8.6	8.5	8.3
5	8.3	8.1	8.1				8.8	9	8.7	8.5	8.5	8.3
6	8.3	8.1	8.1				8.8	9	8.7	8.6	8.5	8.2
7	8.3	8.1	8				8.7	9	8.7	8.5	8.6	8.2
8	8.3	8.1	8.1				8.8	8.9	8.7	8.6	8.6	8.3
9	8.3	8.1	8.1				8.8	8.8	8.7	8.6	8.6	8.3
10	8.3	8.1	8.1				8.6	8.8	8.8	8.6	8.5	8.3
11	8.3	8.1	8.1				8.7	8.8	8.7	8.6	8.5	8.3
12	8.3	8.1	8.1				8.6	8.7	8.8	8.5	8.5	8.3
13	8.3	8.2	8.2				8.6	8.7	8.8	8.5	8.4	8.2
14	8.3	8.2	8.2				8.6	8.6	8.7	8.5	8.4	8.2
15	8.3	8.2	8.2				8.7	8.6	8.8	8.5	8.4	8.3
16	8.3	8.2	8.2				8.7	8.6	8.8	8.5	8.4	8.3
17	8.2	8.2	8.2				8.7	8.6	8.8	8.5	8.4	8.3
18	8.2	8.2	8.3				8.7	8.6	8.5	8.5	8.5	8.3
19	8.2	8.2	8.3				8.7	8.6	8.4	8.5	8.4	8.3
20	8.2	8.2	8.3				8.8	8.6	8.5	8.5	8.4	8.3
21	8.2	8.2	8.3				8.8	8.6	8.5	8.5	8.4	8.3
22	8.2	8.2	8.3			8.8	8.8	8.6	8.5	8.5	8.4	8.3
23	8.2	8.2	8.2			8.8	8.8	8.7	8.5	8.5	8.4	8.3
24	8.2	8.2	8.2			8.8	8.8	8.6	8.5	8.6	8.4	8.2
25	8.2	8.2	8.2			8.8	8.9	8.6	8.5	8.6	8.4	8.2
26	8.2	8.2	8.2			8.8	8.9	8.6	8.5	8.6	8.4	8.2
27	8.2	8.2	8.2			8.9	8.9	8.6	8.5	8.6	8.5	8.2
28	8.2	8.1	8.2			8.9	8.9	8.6	8.5	8.5	8.3	8.3
29	8.2		8.2			8.9	8.9	8.6	8.5	8.5	8.3	8.2
30	8.2		8.2			9	8.9	8.6	8.4	8.5	8.3	8.2
31	8.2		8.2				8.9	8.6		8.5		8.2
Dan	17	8	1	1	22		10	12	30	1	26	5
Tnk	8.2	8	7.9	8.2	8.8		8.6	8.5	8.2	8.3	8.3	8.2
Ts	8.3	8.2	8.2	8.2	8.9		8.8	8.7	8.6	8.5	8.4	8.3
Tvk	8.3	8.2	8.3	8.2	9		9.1	9.1	9.2	8.8	8.6	8.5
Dan	1	1	18	1	30		1	7	17	4	1	5
Tnk		7.9			Ts		8.5			Tvk		9.2



C.5. Dnevne vrednosti specifične električne prevodnosti z diagramom – v $\mu\text{S}/\text{cm}$ (l. 2005)

Št.: 1 IZVIR KAMNIŠKA BISTRICA												Št.: 3 METLIKA METLIŠKI OBRH													
Šif: 4360 Tip: P Kota"0": ----												Šif: 4995 Tip: P Kota"0": ----													
Dan	1	2	3	4	5	6	7	8	9	10	11	12	Dan	1	2	3	4	5	6	7	8	9	10	11	12
1	175	166		169	169	148	150			169	164	168	1	422	461	429	396	429	431	446	445	424	416	468	373
2	174	166		169	167	148	149			168	164	167	2	424	462	431	397	430	430	432	446	424	431	469	381
3	173			169	164	148	149			166	164	170	3	427	462	433	403	431	431	423	448	425	444	469	387
4	172			169	161	148	150			164	164	186	4	428	462	434	409	432	434	425	453	427	461	470	400
5	171			168	158	148	150			165	164	186	5	429	462	436	414	434	438	428	451	428	445	470	405
6	171			168	158	148	153	166		164	164	189	6	431	461	438	419	433	436	429	448	415	428	471	419
7	170			168	158	148	154	166	163	163	186		7	436	461	439	423	432	435	426	453	433	430	472	416
8	170			168	158	148	156	165	163	163	182		8	440	461	441	425	434	431	425	438	436	435	472	418
9	170			173	159	149	157	165	163	163	178		9	441	462	442	428	435	432	428	428	427	439	472	415
10	170			177	160	149	157	165	163	163	176		10	441	462	436	441	429	433	386	430	439	443	471	425
11	170			177	160	149	158	165	163	164	174		11	443	462	434	406	424	434	414	432	441	443	472	432
12	170			177	161	149	158	165	164	163	173		12	444	462	451	405	419	436	420	420	443	447	474	440
13	169			177	161	149	159	165	164	163	172		13	445	471	461	387	420	438	414	422	444	451	474	448
14	169			177	161	150	160	164	164	163	171		14	446	447	443	395	420	440	417	419	446	451	474	454
15	169			173	160	150		164	164	163	171		15	447	427	435	407	422	442	422	441	453	453	474	459
16	169			172	161	151		164	165	163	171		16	448	428	441	417	425	439	423	434	452	455	475	460
17	169			172	161	151		164	165	163	170		17	450	438	420	426	427	440	423	419	450	456	476	464
18	169			172	161	152		164	165	163	170		18	452	439	399	429	447	436	425	425	451	458	477	466
19	169			172	159	152		163	165	163	170		19	453	442	381	433	415	434	431	426	461	460	474	467
20	168			173	157	151		163	165	163	169		20	453	440	380	435	400	440	459	427	453	463	473	466
21	168	173		176	157	150		163	165	163	168		21	454	432	385	435	373	443	449	433	452	465	474	463
22	168	171		178	155	150		163	165	163	168		22	456	427	389	434	380	440	441	428	448	467	474	461
23	168	169		176	154	149		164	165	163	168		23	456	425	394	437	396	443	444	406	447	467	473	461
24	168	169		175	153	149		164	165	163	168		24	456	426	396	440	408	448	442	411	447	468	472	462
25	167	168		175	154	149		165	165	163	168		25	457	428	400	442	415	450	434	409	449	466	472	463
26	167	169		174	152	149		165	165	163	167		26	457	428	401	440	415	450	440	407	452	465	477	467
27	167	170		174	151	148		166	165	167	167		27	458	429	403	429	418	451	428	408	440	466	431	468
28	167	170		171	150	148		166	165	173	167		28	458	429	408	427	424	451	426	413	437	466	411	468
29	167	169		170	150	148		166	165	170	167		29	459		383	424	425	451	426	419	451	466	373	468
30	166	169		170	149	148		172	165	169	167		30	459		396	428	427	449	441	421	448	467	370	468
31	166	169		173	148			165	165	167	167		31	460		403		430		444	422		467		469
Dan	31	1	23	9	31	2	1	12	26	25	17		Dan	1	23	19	13	21	23	10	7	9	2	29	1
EPnk	164	166	168	166	148	139	147	158	155	149	157		EPnk	420	424	378	385	371	275	250	382	256	338	365	372
EPs	169	166	169	173	158	149	154	165	165	164	172		EPs	446	446	418	421	421	440	429	428	441	453	462	442
EPvk	176	166	173	181	170	152	160	173	170	173	191		EPvk	461	481	475	477	477	452	472	466	477	478	498	469
Dan	1	1	21	9	1	17	13	30	1	27	5		Dan	31	13	13	10	18	29	20	7	30	4	26	26
EPnk		139					164				191		EPnk		250					EPs	437			EPvk	498



C.5. Dnevne vrednosti specifične električne prevodnosti z diagramom – v $\mu\text{S}/\text{cm}$ (l. 2005)

Št.: 6 IZVIR PODROTEJA												
Šif: 8453 Tip: P Kota"0": 327.780												
Dan	1	2	3	4	5	6	7	8	9	10	11	12
1	296	340	336	287			351	341	329	290	341	293
2	300	341	348	288			342	342	330	309	342	297
3	301	343	349	290			344	343	331	323	341	299
4	303	344	347	290			338	345	331	323	336	280
5	304	342	347				333	346	331	321	336	269
6	309	336	346				332	346	330	321	337	253
7	315	330	349				326	347	328	323	340	270
8	316	327	358				324	342	328	326	341	291
9	318	332	358				315	343	328	331	332	299
10	321	338	358				309	338	337	333	329	303
11	322	342	359				311	338	342	335	329	307
12	323	343	359				312	331	342	334	330	312
13	323	353	362				314	323	339	334	332	314
14	323	357	358				315	293	340	335	336	317
15	323	354	358				318	297	342	336	340	319
16	325	350	355				319	299	342	345	344	324
17	327	349	345				319	297	343	351	346	340
18	328	349	331				320	299	295	352	343	340
19	329	349	318				321	304	298	353	338	340
20	330	349	306				322	305	308	353	339	341
21	330	348	297				323	305	315	354	340	341
22	331	344	292			336	324	306	319	355	342	342
23	332	342	292			339	326	312	321	350	343	343
24	332	336	291			340	328	308	324	348	344	341
25	333	323	294			342	329	313	324	346	345	342
26	334	331	292			342	331	317	325	342	347	343
27	335	338	273			343	332	319	325	335	320	344
28	336	331	271			344	334	319	328	332	278	346
29	337		276			347	336	320	330	332	283	344
30	338		286			351	338	323	292	334	297	342
31	339		285				339	330		337		343
Dan	1	8	27	1		22	5	14	30	1	27	6
EPnk	295	287	270	284		323	303	290	261	285	275	230
EPs	323	341	326	289		343	327	322	327	335	333	319
EPvk	339	358	367	291		352	352	350	364	356	364	347
Dan	31	14	13	3		30	1	13	17	23	27	28
EPnk			230			EPs		328		EPvk		367

